

# Understanding Your 2024 **PROPERTY TAX NOTICE**



Each year in May, the City of Spruce Grove sends tax notices to Spruce Grove property owners. This notice includes your municipal property tax levy, as well as levies the City collects on behalf of other organizations for education and seniors' affordable housing.

## **Property taxes fund City services and amenities**

The City's interim 2024 municipal budget was approved by City Council in the fall of 2023 as part of the 2024-2026 Corporate Plan. Council approved the final 2024 budget on April 8, 2024, with the Spring Budget Adjustment. This budget funds all the services the City offers, such as roads, public transit, public safety, parks and open spaces, programming, community amenities, and much more! The costs of providing these services are shared by property owners through the municipal portion of your property taxes and are allocated based on property assessment value.

## **How property taxes are calculated**

Earlier this year, you received your 2024 annual assessment notice that outlined the total assessed value of your property. Assessment values are based on the provincially legislated valuation date of July 1, 2023, and the physical condition of a property as of December 31, 2023. The amount of property tax you pay is based on this assessed value. The assessed value of your home can vary from today's market value and will be reflected in next year's assessment value.

## **Questions?**

Call: **780-962-7634 ext. 119**

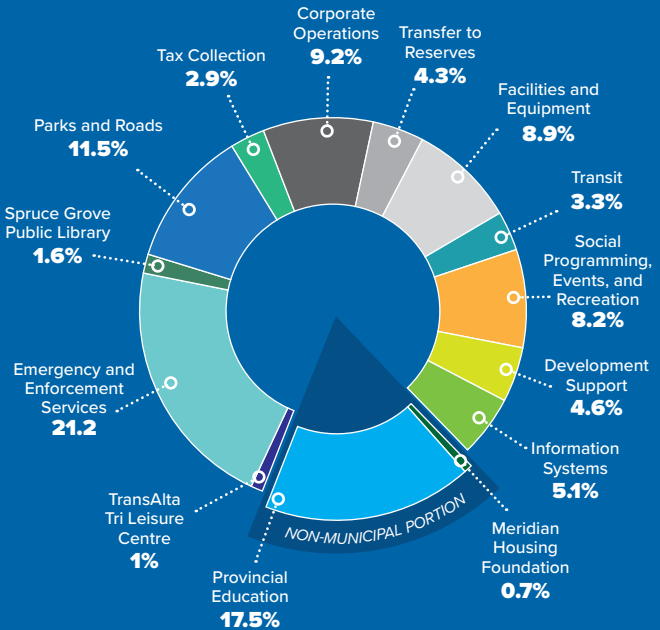
Email: [propertytaxes@sprucegrove.org](mailto:propertytaxes@sprucegrove.org)

Visit: [sprucegrove.org/PropertyTax](https://sprucegrove.org/PropertyTax)

# Where Do Your Tax Dollars Go?

## Municipal portion of property taxes

The municipal portion of your property taxes is based on the City's budgeted revenue requirements. This portion is retained by the City and is used to pay for amenities and services for residents and the community as a whole.



## Non-municipal portion of property taxes

Your tax bill also includes levies the City collects on behalf of others for education and senior living. Taxpayers are required to pay these amounts whether or not they use the services.

*Education taxes:* The Alberta Education Levy and the Evergreen Catholic School Levy are collected on behalf of the Government of Alberta for education.

*Meridian Housing Foundation:* The City of Spruce Grove, Town of Stony Plain, and Parkland County are required to collect taxes set by the Meridian Housing Foundation (MHF) to contribute to seniors' living facilities. This amount has increased because MHF is constructing a new facility.

For details, visit [sprucegrove.org/YourPropTaxBill](https://sprucegrove.org/YourPropTaxBill).